

# MODEL ILLINOIS GOVERNMENT REGIONAL PLAN

Governor Lorenzo B. Webber

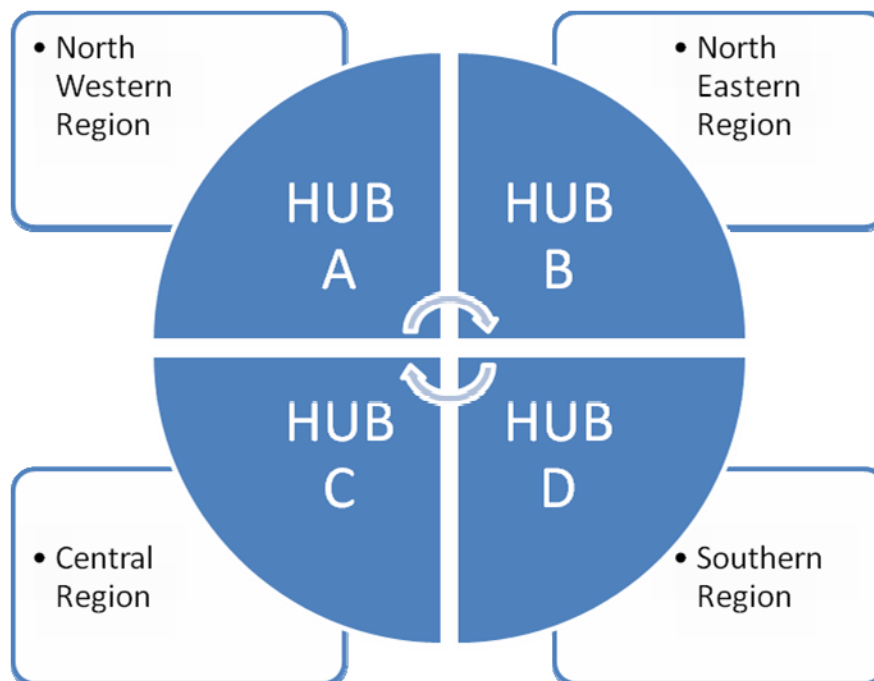


## REGIONAL PLAN

In concordance with the Progressive Track Plan (PTP), the Regional Plan aims to further assist in creating and sustaining a culture of unity and communication within Model Illinois Government, while also fulfilling all the other goals outlined in the PTP.

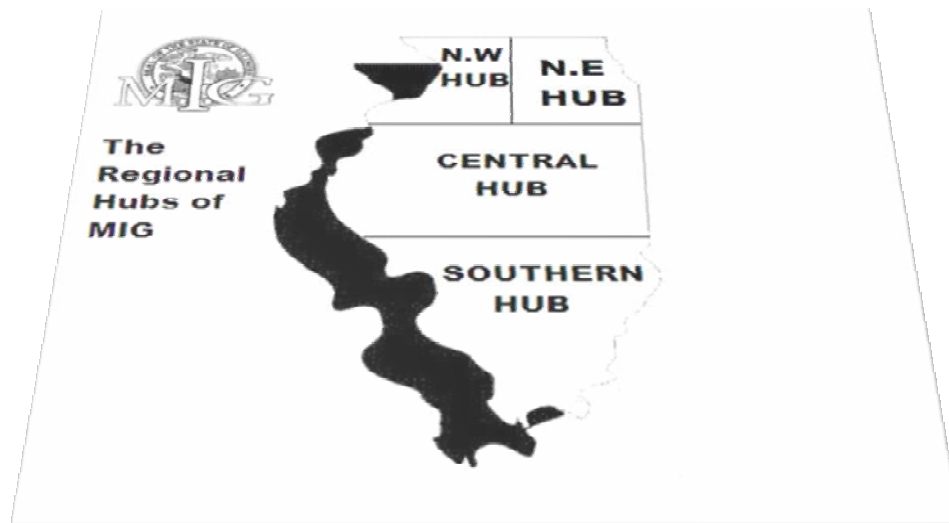
**Mission:** To create an infrastructure within Model Illinois Government that encourages retention, growth, and training for all current member schools and those to come.

**Vision:** Model Illinois Government will have Regional Hubs that serve the main geographical areas of the great State of Illinois by hosting training session, pre simulations, or general information session. Those geographical areas are; north western, north eastern, central, and Southern. This serves as a great tool for current and potential member schools as well as encouragement for early training.



## MODEL ILLINOIS GOVERNMENT REGIONAL PLAN

Governor Lorenzo B. Webber



### Understanding the Regional Structure and Everyone's Role

- Member schools that volunteer and provide adequate reason will be considered by the **Governor** under advisement of the Executive Committee.
- Member schools that are selected to be a Regional Hub will be assigned according to their there geographical location.
- Regional Hubs are to host at least one pre-simulation, training session, or general information session in which other schools are invited to attend.
- Additional Regional Hubs may be formed based on need.
- The **Governor's Regional Staff** and **Regional Officers** will serve as stewards and liaisons between the Hubs and the Governor to ensure that the regional plan is fulfilling the annual objectives set forth by the Governor.
- **Regional Officers** will also work with the **Lt. Governor** and other members of the Executive Board regarding retention, recruitment, and training. Regional Officers will be non-voting and part of Governor's staff.
- Regional Officers must keep a record of scheduled pre-simulations, training sessions, and information sessions in their region and submit a copy to the **Secretary of State**.
- The Secretary of State will email member schools of upcoming Pre-Simulations and keep record of those attended.
- **Chamber Heads** are to provide general pre-simulation guidelines for hubs that plan to host Pre-Simulations or Training Sessions.

## MODEL ILLINOIS GOVERNMENT REGIONAL PLAN

Governor Lorenzo B. Webber

### **5-Year Regional Plan Break Down**

#### **1. 2010-11 Year 1-Region and Hub Formation**

- a. Create Map that defines regions
- b. Create information and guidelines for regional hubs.
- c. Identify and list member schools of regions
- d. Inform Member schools of regional hub status opportunity
- e. Appoint Regional Hubs, Regional Officers, and necessary staff

#### **2. 2011-12 Year 2- Regional Recruitment**

- a. Invite major colleges and universities, high schools to attend pre-simulations, training session, and information session being held through out the state.
- b. Provide incentives and special recognition to regional hubs and officers that successfully bring in new member schools.
- c. Seek state support to promote Model Illinois Government as the best option for hands on learning outside the classroom.

#### **3. 2012-13 Year 3- MIG Culture Formation**

- a. Create regional identity by assigning regions certain names
  - i. Ex. The Mighty North East, The Proud North West, The Central Madness, and The Great South.
- b. Create friendly competition between the region to bring the most delegates to the upcoming simulation and provide grand rewards to the victor
  - i. Ex. The MIG Banner for the year leading to the next simulation
- c. Create chants and catch phrases for MIG.
  - i. Ex. Do it big...join MIG, AAAARRUUUU, The Great State of MIG, Your in MIG Country, Get the MIG Fever, The MIG Experience.

#### **4. 2013-2014 Year 4-Cometition Culture for Regional Hub Status**

- a. Integrate member schools opportunity to achieve hub status into a competition or election.
  - i. Regions will select there own Hubs with the approval of the governor
- b. Allow schools with hub status that achieve a certain performance goal set forth by the Governor and Executive board to receive discount of school registration and/or delegate fee.

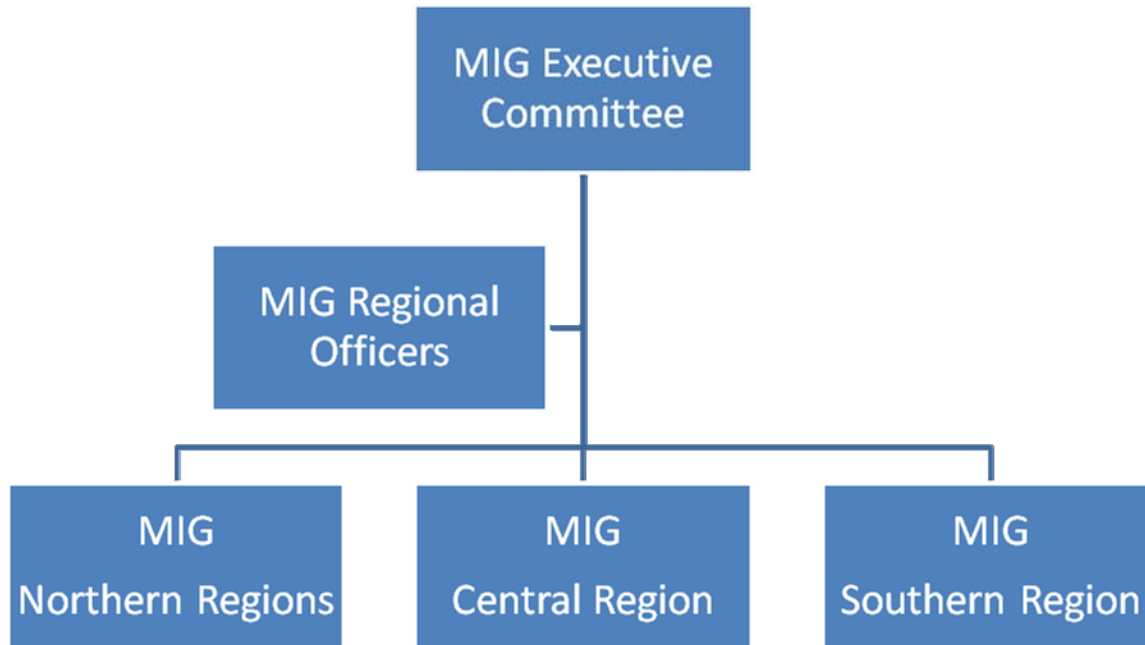
#### **5. 2014-2015 Year 5- Finalizing Regional Structure and expansion**

- a. Regional Officers will be made advisory non voting members of the executive committee to ensure that the actions taken by the board are in the best interest of all the regions.
- b. Regional Structure will be added to the bylaws.
- c. Executive committee will seek to have one big pre- simulation before regular annual simulation.

As a result MIG will have quadrupled in size and a permanent new structure.

## MODEL ILLINOIS GOVERNMENT REGIONAL PLAN

Governor Lorenzo B. Webber



### Goals

- 400+ Individual Memberships.
- 30 Member Schools bringing an average 13 delegates
- MIG culture established with regional identity is in place
- MIG has a great relationship with many of the major colleges of universities of Illinois